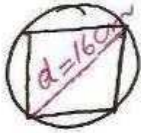


⑧



$$\begin{aligned} \text{diameter of } \odot &= 2r \\ &= 2 \times 8 \\ &= 16 \text{ cm} \end{aligned}$$

diagonal of square  
= diam. of  $\odot$

$$d = 16 \text{ cm}$$

$$\begin{aligned} \text{area of square} &= \frac{1}{2} d^2 \\ &= \frac{1}{2} \times 16 \times 16 \\ &= 128 \text{ cm}^2 \\ &\text{(B)} \end{aligned}$$

NCERT Exemplar Solutions by Dev Anoop (Bathinda)

⑨ cont. from 2

$$\begin{aligned} R &= R_1 + R_2 \\ &= 18 + 10 \\ &= 28 \text{ cm} \quad \text{(C)} \end{aligned}$$

⑩ cont. from 1

$$\begin{aligned} R^2 &= R_1^2 + R_2^2 \\ &= 24^2 + 7^2 \\ &= 576 + 49 \\ &= 625 \\ \Rightarrow R &= \sqrt{625} \\ &= 25 \text{ cm} \end{aligned}$$

$$\begin{aligned} \text{diameter} &= 2r \\ &= 2 \times 25 \\ &= 50 \text{ cm} \quad \text{(D)} \end{aligned}$$