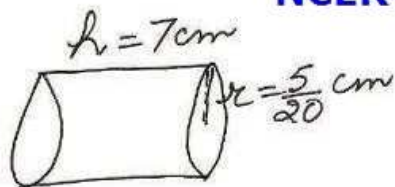


NCERT Exemplar Solutions by (Dev Anoop)

④



volume of ink in fountain pen = $\pi r^2 h$

$$= \frac{22}{7} \times \frac{5}{20} \times \frac{5}{20} \times 7$$

$$= \frac{275}{2 \times 100}$$

$$= 1.375 \text{ cm}^3$$

$$= \frac{1.375}{1000} \text{ l}$$

words ink $\frac{1.375}{1000} \text{ l}$ can write = 3300

words $\frac{1}{5} \text{ l}$ ink can write

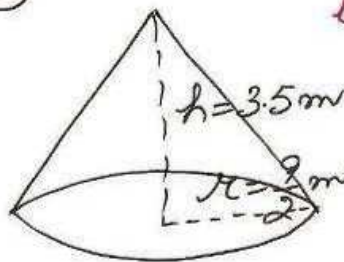
$$= \frac{3300}{\frac{1.375}{1000}} \times \frac{1}{5}$$

$$= \frac{660}{3300 \times 1000} \times \frac{1}{5}$$

$$= \frac{6}{66 \times 10000000} \times \frac{1}{5}$$

$$= 480000 \text{ NCERT Exemplar Solutions by (Dev Anoop)}$$

⑤



$$l = \sqrt{3.5^2 + 2^2}$$

$$= \sqrt{12.25 + 4}$$

$$= \sqrt{16.25}$$

$$= 4.03 \text{ m}$$

volume of rice in heap = $\frac{1}{3} \pi r^2 h$

$$= \frac{1}{3} \times \frac{22}{7} \times \frac{9}{2} \times \frac{9}{2} \times 3.5$$

$$= \frac{297}{4}$$

$$= 74.25 \text{ m}^3$$

area of cloth required to cover the heap

$$= \pi r l$$

$$= \frac{22}{7} \times 2 \times 4.03$$

$$= \frac{564.3}{7}$$

$$= 80.61 \text{ m}^2$$